

Recognize Common Symptoms of Seizures

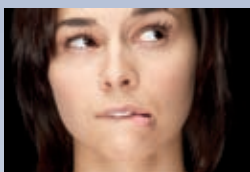
For These Types of Seizures:

- Complex Partial
- Psychomotor
- Temporal Lobe

Blank staring



Chewing



Fumbling



Wandering



Shaking



Confused speech



**EPILEPSY
FOUNDATION®**
Not another moment lost to seizures™

First Aid for Seizures

Don't restrain



Explain to others



Block hazards



Speak calmly & remain nearby until seizure ends



People who've had this type of seizure should be fully conscious and aware before being left on their own. Make sure they know the date, where they are, where they're going next. Confusion may last longer than the seizure itself and may be hazardous. If awareness does not return, call for medical assistance.



**EPILEPSY
FOUNDATION**[®]

Not another moment lost to seizures[™]

800-332-1000

www.epilepsyfoundation.org

This publication was made possible by a grant from the Centers for Disease Control and Prevention (grant number 5U58DP000606-04) and its contents are solely the responsibility of its author and do not necessarily represent the official views of the CDC.

©2009 Epilepsy Foundation of America, Inc. Rev 11/09 EFA267